



## Anti Slip Stair Treads, Floor Mats, Plates & Decking

### About RezCast®

RezCast® Safety Flooring products are produced by RezTech Technical Services, based in Fresno, California. Established in 1980, RezTech is a leading manufacturer of the high performance polymer coatings and components. In 1990, the company began manufacturing the pre-cast, anti-slip polymer composite products, which are now marketed under the RezCast® name.

The current RezCast® product line includes anti-slip step covers, structural stair treads, landings and plates, floor & deck coverings, and stair tread covers for mass transit vehicles. Our technology can be adapted to many applications. For those with unique or unusual requirements, we welcome special orders.

Over the years RezCast® products have gained wide acceptance in a variety of industries and applications. Here are just a few examples of how some of our key customers are using RezCast® products.

RezCast® safety flooring products have been used in by the military and aerospace agencies, including installations on launch pads at Cape Canaveral, FL.

The World Trade Center 9/11 viewing tower stairway access was equipped with RezCast® commercial grade step covers for slip resistance and visibility safety.

Major food processing companies such as Del Monte Foods Inc, use RezCast® products in their production facilities.

Manufacturers, such as Harley Davidson, use RezCast® anti-slip flooring components in their motorcycle manufacturing facilities power train lines.

Our bus step cover products are widely used as original equipment replacements by school districts, tour bus companies and public transit organizations.

RezCast<sup>®</sup> step covers and floor covering materials can be found in many commercial buildings, installed on stairways and handicap access ramps.

The wide variety of available colors and textures makes RezCast<sup>®</sup> products ideal for residential and other decorative applications.

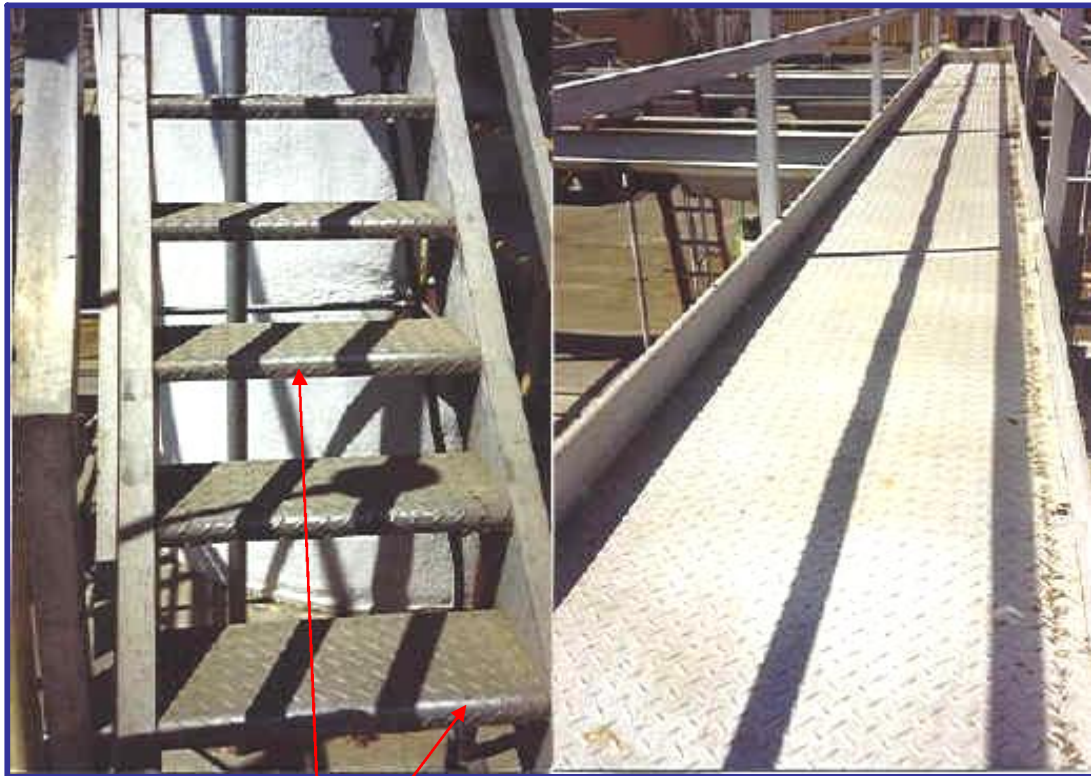
In aquatic facilities such as public pools and water parks, RezCast<sup>®</sup> products are installed in wet areas, on ladders, steps and ramps as a way to improve traction and reduce the risk of slips and falls.

## The Issue of Slip/Fall Accident Liability

- **Over 12,000 people die from slip and fall accidents annually. Over 2.5 million falls on stairways result in about 2 million disabling injuries yearly.** According to the National Safety Council, the major cause of accidental deaths and injuries in America's buildings are slip and fall accidents.
- **According to the Bureau of Labor Statistics, over 17% of all disabling work injuries are the result of falls. In 1991, the National Safety Council reported 1247 deaths from industrial falls.**
- **Dr. Stephen Rosen [2], states, "The National Safety Council has verified that the major cause of accidental deaths and injuries in America's buildings are slip and fall accidents. More than 50 per cent of all falls are caused by a slippery walking surface, that is, a low anti-slip coefficient of friction surface."**
- **Each year there are over 2 million disabling stair fall accidents, including over 4000 deaths. It is estimated that over 70% of the stair systems in the US have at least one serious defect.**
- **Falls on ramps comprise about 8% of all slip and fall accidents, but with the construction of new ramps (particularly from the American With Disabilities Act), such accidents are on the rise. It has been stated that at least 50% of the new ramps built in the US do not comply with code and ordinances, but are also hazardous to both pedestrians and the handicapped [2].**

Statistical excerpts taken from "SLIPS, TRIPS, & FALLS"  
Written By Larry M. Roderick, Ph.D., P.E.

Diamond plate stairways & walkways present particularly dangerous slip/fall conditions in both wet and dry climates. Metal nosings become polished with exposure to traffic, and are less likely to provide any coefficient of friction at that critical location on the stair tread. Grease, oils, fats and other products used in industrial production and processing add to slip/fall hazards.



Diamond Plate Metal Nosings

# RezCast<sup>®</sup> Benefits

**The following are among the many reasons RezCast<sup>®</sup> Products are the best answer to correcting potentially dangerous and costly slip and fall conditions on walkway and stairway accesses:**

- ✓ Slip/fall accidents are one of the leading causes of disabling injuries and result in millions of dollars in workman's compensation claims, litigation, and lost man hours on the job, affecting productivity.
- ✓ Liquid applied coatings do not bond well to steel or concrete substrate surfaces over the long term, and often become repetitious, routine maintenance problems. "In house" employees do not often have the skills or understanding of coatings materials and preparation procedures to be successful with those types of applications.
- ✓ Numerous safety concerns are associated with the use of liquid coating applications, including handling toxic materials and the disposal of hazardous chemical containers and materials.
- ✓ RezCast<sup>®</sup> products can potentially save the customer numerous liquid coating applications, requiring downtime and increased liability.
- ✓ RezCast<sup>®</sup> products are installed using mechanical fasteners such as screws, or bolts to insure permanence, without the concern of potential bonding problems associated with liquid applied coating applications.
- ✓ RezCast<sup>®</sup> stair tread components have a unique "toe" (nosing) design which carries the coefficient of friction property over the critical landing and take-off part of the tread. When ascending a stairway, foot traffic tend to step or use the "toe" of the tread to "take-off" from rather than landing on the horizontal surface. When descending the stairway, the traffic tends to leave each step at the "toe". This is the primary cause of the polishing effect associated with a metallic stair tread "toe" (nosing).
- ✓ RezCast<sup>®</sup> has a proven track record of long term durability in a variety of industrial and commercial environments, where chemical exposure levels range from mild to harsh. RezCast<sup>®</sup> products carry a limited 10 year warranty.
- ✓ In new or retro-fit construction projects, RezCast<sup>®</sup> structural LB stair treads and plates are a practical alternative to using steel stair treads and landings or walkways due to the amount of additional expense required to "non-slip" these types of walking surfaces using liquid applied coatings, after construction is completed.
- ✓ RezCast<sup>®</sup> stair treads are manufactured to specifications to meet customer requirements, including color, slip-resistant profile, chemical exposure, shape and size.